

June 2025



Jesuit European
Social Centre

Project brochure

JESC Carbon Initiative



Empowering Faith Actors for the Ecological Transition

Sustainability

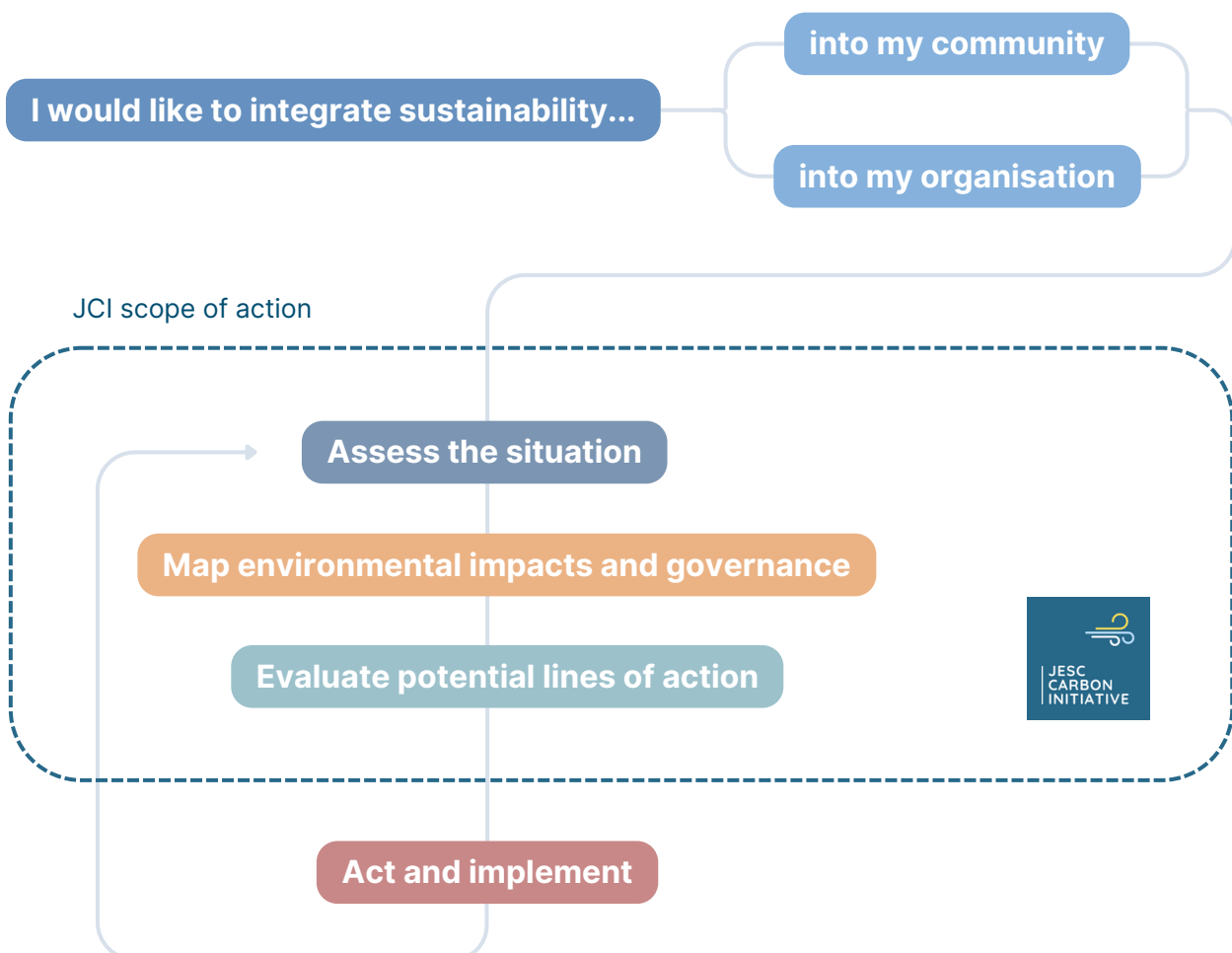
Leadership

Awareness and education

What does this project aim to achieve?

Launched in 2022, the JESC Carbon Initiative aims to empower faith actors to lead and become active participants in the ecological transition. The project provides faith actors with accompaniment and custom tools to evaluate their ecological impact, identify areas for improvement, and implement sustainable practices, tackling not just greenhouse gas emissions, but also land and resource use, as well as supporting better ways to monitor and manage sustainability.

The project currently addresses both personal lifestyles as well as the organisational dimension of the ecological transition - working together with faith communities, NGOs, schools, parishes and other institutions in Europe and beyond towards improved environmental management.



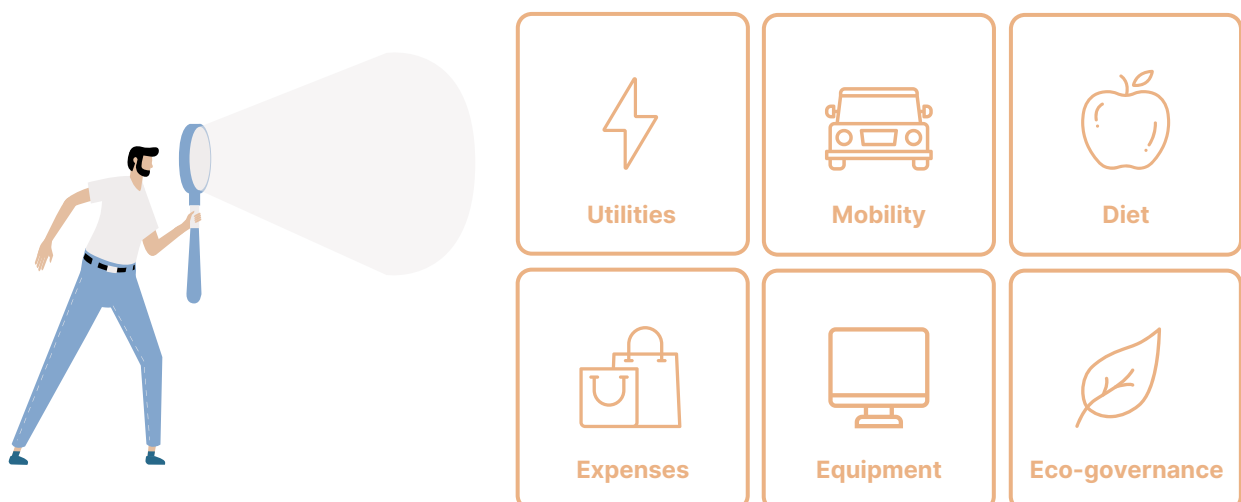
The aim of a JCI project is to develop the foundations of an ecological conversation and / or strategy grounded on science and data upon which a community or organisation can structure its efforts to align with nature and become more sustainable. In order to achieve this, JCI projects revolve around accompanied assessment processes which help evaluate how to reduce environmental impact.

How does it work?

JCI projects are based on different assessment models tailored to different types of partners. Whether working with faith communities, schools, or institutions, each model is adapted to the specific reality, scope, and needs of the partner involved. This flexible approach ensures that assessments are both meaningful and actionable, providing clear pathways for reflection, ecological conversion, and sustainable change in different settings.



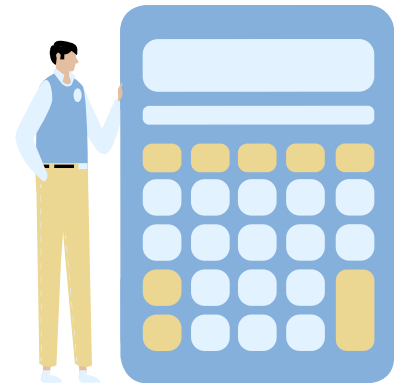
JCI projects can address both the environmental impact of lifestyles and of the regular operations of an organisation. Based on the line of work, JCI projects use a predetermined scope of analysis adapted to the nature, mission, and operational realities of each partner.



Working with faith communities

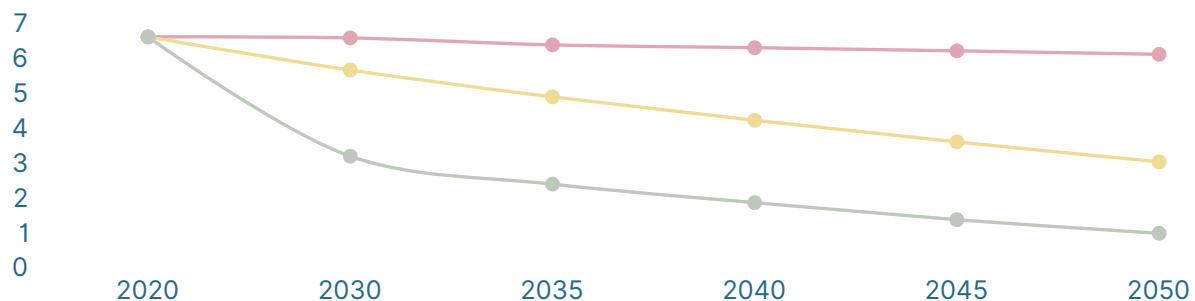
JCI works together with faith communities to align lifestyles with the values of justice, care for creation, and responsibility toward future generations. This means rethinking everyday choices - such as travel, diet, energy use, and consumption patterns - in light of the urgent need to stay within planetary boundaries and meet the goals of the Paris Agreement.

Our work serves as the basis for personal and community reflection, as well as a framework for collective action and planning (policies, provincial strategy, investments).



Global per capita emissions evolution under main climate scenarios (tCO₂e per year)

● "Business as usual" scenario (2.5-2.9°C) ● Pledges and targets (2.1°C) ● 1.5°C compatible



Meet our partners



"Working with JESC has enabled us to estimate and analyse the EOF Province's carbon footprint, giving us the benchmarks we needed to take a consistent approach to reducing our emissions"

Gabrielle Pollet Ecological Transition Officer, Jesuit EOF Province

Working with institutions

JCI works together with institutions to align their operations and strategies with the values of ecological justice, sustainability, and long-term responsibility. Our projects help organisations evaluate and monitor their environmental impact, incorporate sustainability into decision-making, and develop pathways to reduce their ecological footprint and promote responsible resource use. The assessment brings together management and all staff in a participative process that raises climate awareness, builds a common vision for sustainable transformation, and actively collects feedback from all participants to inform continuous improvement.



By the end of a JCI project, institutions have a clear sustainability baseline made up of benchmarks from which to strategise efforts and measure progress, improved ecological literacy across the community, strengthened internal engagement around sustainability goals, and a concrete, mission-aligned roadmap to guide long-term ecological action.



Meet our partners

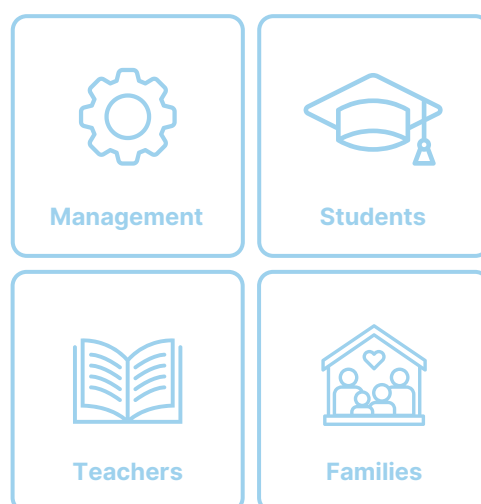
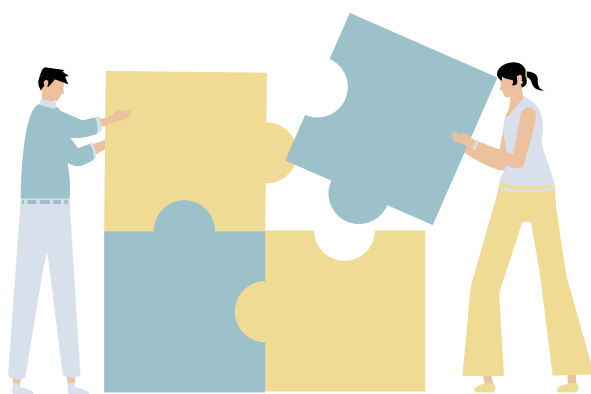


CAMPION HALL
UNIVERSITY OF OXFORD



Working with schools

JCI works together with schools to integrate sustainability into their operations and their wider educational mission. Our projects provide a hands-on environmental management experience that engages students, staff, teachers, and school leadership in a participative process. This approach raises climate awareness, strengthens ecological literacy, and fosters a sense of shared responsibility across the whole educational community. By combining environmental research and practical action with learning, schools can not only reduce their ecological footprint, but also nurture and empower new generations to be agents of a transition towards a more just and sustainable world.



Meet our partners



"JCI [...] provides a robust analysis of ecological impacts, attitudes and school strategy which will greatly help shape coherent transition plans and impactful actions. This project is an essential step toward scaling the transition across EOF Province schools in France."

Emanuelle Huet Ecological Transition Officer, Jesuit EOF Province

Working with parishes

JCI works together with parishes to align their administrative, liturgical, and outreach activities with the values of ecological justice, sustainability, and faithful stewardship, offering tailored projects that help parishes evaluate and monitor their environmental impact, integrate creation care into decision-making, and chart pathways to reduce their ecological footprint.



Our projects support parishes in establishing a comprehensive environmental baseline that serves not only to identify key areas for improvement, but also to provide a strong and informed foundation for planning and prioritising future efforts and investments.

By positioning parishes as inspiring models of faith-rooted environmental stewardship, these initiatives lead by example, energising congregations and neighbouring communities to embrace the call to care for creation. In doing so, they foster deeper ecological awareness and literacy, and nurture a collective sense of responsibility for safeguarding our common home.

Meet our partners



Working on events

JCI works together with institutions on the environmental auditing of events - such as conferences, retreats, or celebrations - to assess their ecological impact and support the planning of more sustainable gatherings. The audit covers all stages of the event, from preparatory work to travel, catering, accommodation, the use of spaces, materials, and overall expenses. Our projects provide organisations with practical data and benchmarks to guide decisions, reduce emissions, and align events with their broader sustainability commitments.



Our projects around events help mainstream ecological awareness by making environmental issues visible and tangible, turning each event into a learning opportunity for organisers, attendees, and the wider public. They also nurture a culture of responsibility where sustainability is integrated into everyday practices and becomes a core expression of the organisation's values.



Meet our partners



Contact us

If you, your organisation, or your community have any questions, would like to learn more about our work, or are interested in partnering with us on a JCI project, we would love to hear from you.

Feel free to get in touch via one of the contact addresses listed below:



Filipe Martins SJ, JESC Director

filipe.martins@jesc.eu



Telmo Olascoaga Michel, Project Manager

telmo.olascoaga@jesc.eu



The JESC Carbon Initiative (JCI) is a project of the Jesuit European Social Centre (JESC), based in Brussels. JESC serves as the social and ecological apostolate of the Jesuits in Europe. It operates under the Jesuit Conference of European Provincials (JCEP), which brings together the leadership of Jesuit provinces across the continent. You can learn more at:

www.jesc.eu



JESC
CARBON
INITIATIVE